

Centre Number						Candidate Number				
Surname										
Other Names										
Candidate Signature										

For Examiner's Use	
Examiner's Initials	
Question	Mark
1	
2	
3	
4	
5	
6	
7	
8	
TOTAL	



General Certificate of Education
Advanced Subsidiary Examination
January 2013

Geography

GEOG1

Unit 1 Physical and Human Geography

Monday 14 January 2013 1.30 pm to 3.30 pm

For this paper you must have:

- a pencil
- a rubber
- a ruler.

You may use a calculator.

Time allowed

- 2 hours

Instructions

- Use black ink or black ball-point pen. Use pencil only for drawing.
- Fill in the boxes at the top of this page.
- You must answer the questions in the spaces provided. Do not write outside the box around each page or on blank pages.
- Answer Question 1 and **one other question** from **Section A** and Question 5 and **one other question** from **Section B**.
- Do all rough work in this book. Cross through any work you do not want to be marked.

Information

- The maximum mark for this paper is 120.
- Each question is worth 30 marks.
- The marks for questions are shown in brackets.
- You are expected to use a calculator where appropriate.
- You will be marked on your ability to:
 - use good English
 - organise information clearly
 - use specialist vocabulary where appropriate.

Advice

- Where appropriate, sketch maps and diagrams should be used to illustrate answers and reference made to examples and case studies.
- You are advised to spend about 60 minutes on Section A and about 60 minutes on Section B.



J A N 1 3 G E O G 1 0 1

Section A

Answer **Question 1** and **one other** question from this section.

1 Rivers, Floods and Management

1 (a) Describe different types of load a river carries.

.....

.....

.....

.....

.....

.....

.....

.....

(4 marks)

Extra space

.....

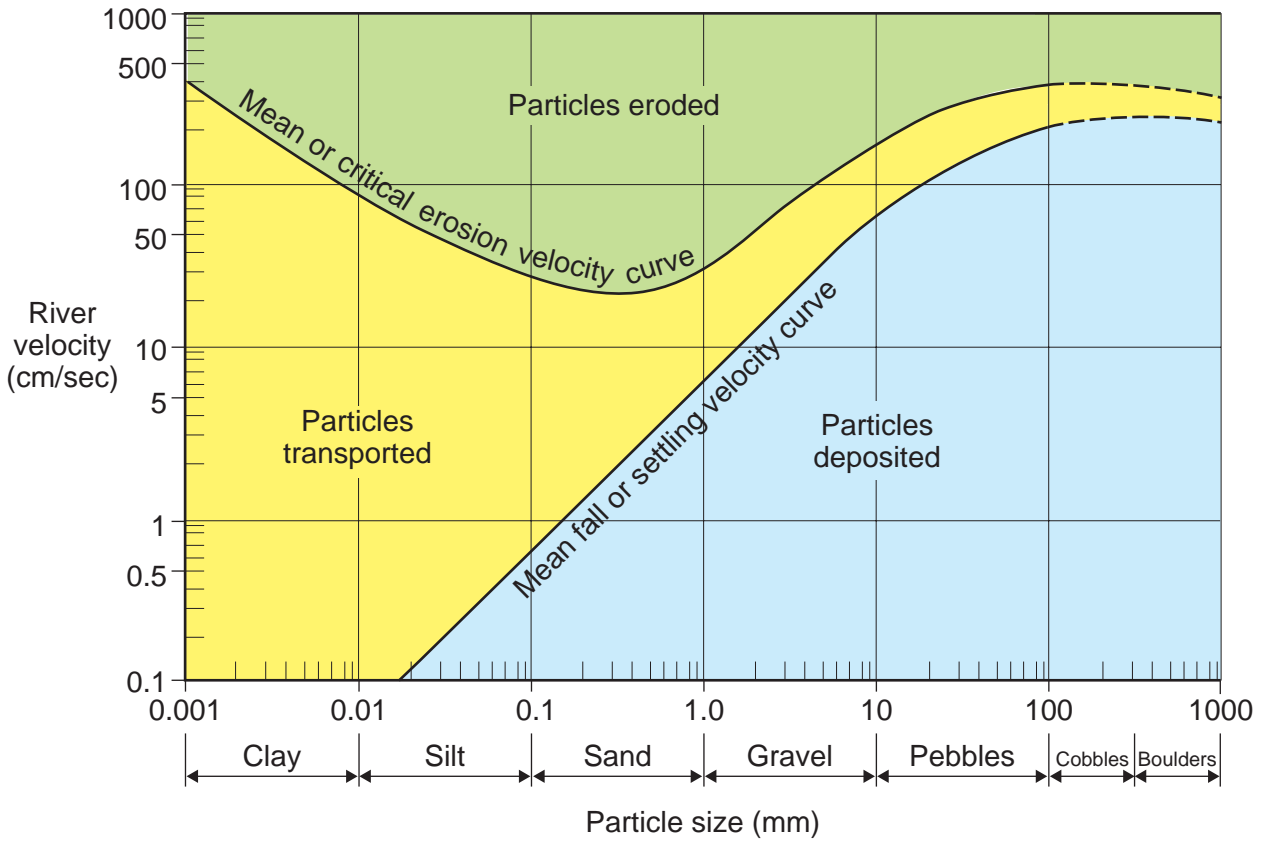
.....

.....



1 (b) Study **Figure 1** which shows the Hjulstrom curve.

Figure 1



1 (b) (i) State the velocity at which particles of clay of 0.001 mm are eroded and the velocity at which pebbles of 10 mm are deposited.

Clay particles of 0.001 mm are eroded at cm/sec.

Pebbles of 10 mm are deposited at cm/sec.

(2 marks)

1 (b) (ii) Describe the relationship between velocity, load size and transportation.

.....

.....

.....

.....

.....

.....

(3 marks)

Question 1 continues on the next page

Turn over ►



- 1 (c) Study **Figure 2** which is an extract from a newspaper article about flooding in Cornwall, in November 2010.

Figure 2

**Rescue helicopters called in as floods cut Cornwall
off from outside world**

The region's worst flooding for decades came after a night of torrential rain that struck as most people were asleep. Hundreds woke to find their homes flooded. Scores of motorists were forced to abandon their cars and, for a short time, Cornwall was all but cut off from the outside world.

Houses and shops in St Austell, St Blazey, Lostwithiel, Par and Mevagissey were inundated, and hundreds of residents cut off. Rescue helicopters were called to help motorists trapped in their cars. Luckily, perhaps miraculously, there were no casualties. The cars that went into the sea were all unoccupied.

At one point, both the main A30 and A38 were closed, as well as the main railway line between London and Penzance – which was hit by a landslip.

The steep cobbled streets of the fishing village of Mevagissey – a honeypot for tourists in summer – turned into a torrent of white water. At first swept clean by the flood waters, the streets were soon strewn with debris. Householders, trying to mop up, ejected everything from sodden carpets to sacks of firewood into the roads.

Cars were left floating in the main square, and most of the harbourside shops and businesses were flooded. The manager of the Ship Inn said: "I live above the pub and when I came down this morning it was just a scene of utter devastation. The bar was waist deep in muddy, brown water, and chairs and stools were floating around.

I knew the rain had been heavy overnight but I never expected this. I only took over the pub a month ago and who knows how long it will take to get it back on its feet."

© *The Times* 11/2010



2 Cold Environments

2 (a) Describe the distribution of polar and alpine cold environments.

.....

.....

.....

.....

.....

.....

.....

.....

(4 marks)

Extra space

.....

.....

.....

2 (b) (i) Study **Figure 3** which shows drumlins in the Lake District.

Figure 3



With the help of **Figure 3** describe drumlins.

.....

.....

.....

.....

.....

.....

.....

.....

.....

(4 marks)

Extra space

.....

.....

.....

Question 2 continues on the next page

Turn over ►



3 Coastal Environments

3 (a) Distinguish between constructive waves and destructive waves.

.....

.....

.....

.....

.....

.....

.....

.....

.....

(4 marks)

Extra space

.....

.....

.....

Question 3 continues on the next page

Turn over ►



3 (b) Study **Figure 4** which shows coastal erosion in Happisburgh, Norfolk.

Figure 4



British Geological Survey © NERC. All rights reserved.
IPR/144-01CT

3 (b) (i) Using **Figure 4 only**, describe evidence that this coast is being eroded.

.....

.....

.....

.....

.....

.....

.....

.....

.....

(4 marks)



4 Hot Desert Environments and their Margins

4 (a) Describe the location of areas of hot desert.

.....

.....

.....

.....

.....

.....

.....

.....

.....

(4 marks)

Extra space

.....

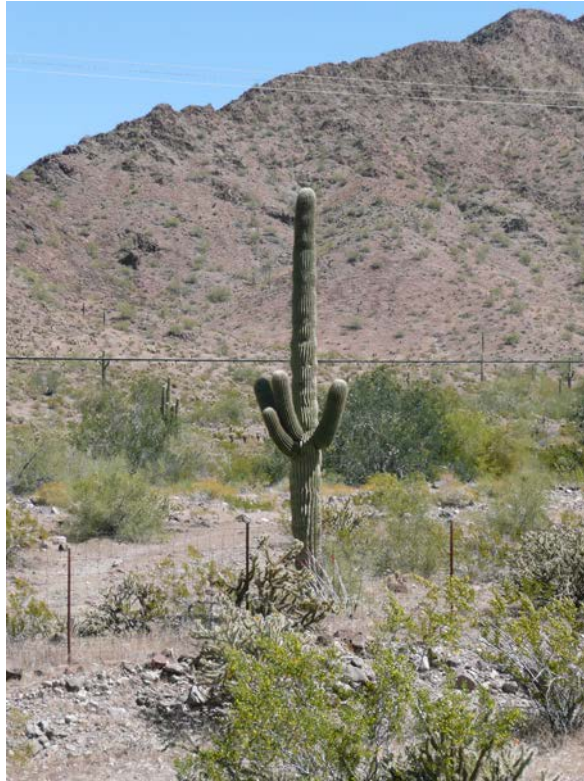
.....

.....



4 (b) Study **Figure 5** which shows some vegetation in a hot desert.

Figure 5



4 (b) (i) Describe the vegetation shown in **Figure 5**.

.....

.....

.....

.....

.....

.....

.....

.....

.....

(4 marks)

Extra space

.....

Question 4 continues on the next page

Turn over ►



Section B

Answer **Question 5** and **one other** question from this section.

5 Population Change

5 (a) Study **Figure 6** which shows the population structure of four countries.

Figure 6

Country	Population aged <15 (%)	Population aged 15–65 (%)	Population aged >65 (%)
Kenya	42	55	3
India	32	63	5
United Kingdom	18	66	16
Germany	14	66	20

Outline contrasts in population structure shown in **Figure 6**.

.....

.....

.....

.....

.....

.....

(3 marks)

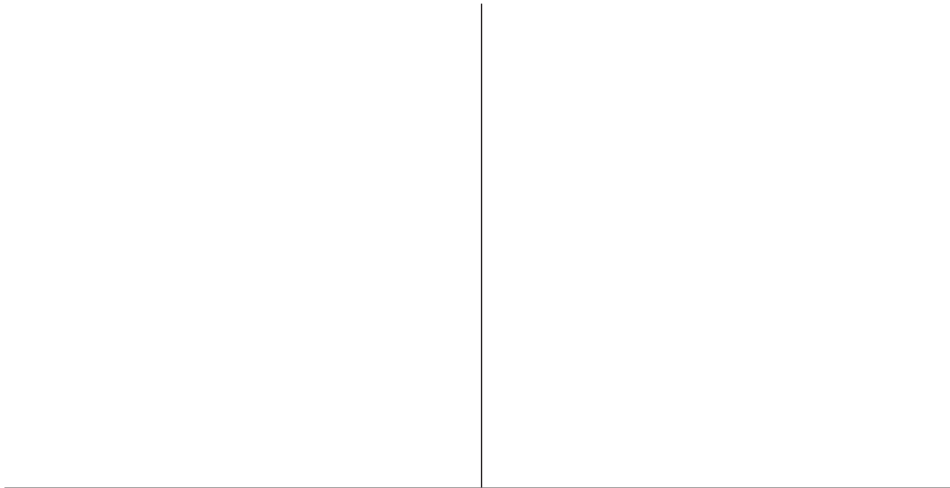
Question 5 continues on the next page

Turn over ▶



5 (b) (i) Population structure changes throughout the stages of the demographic transition model.

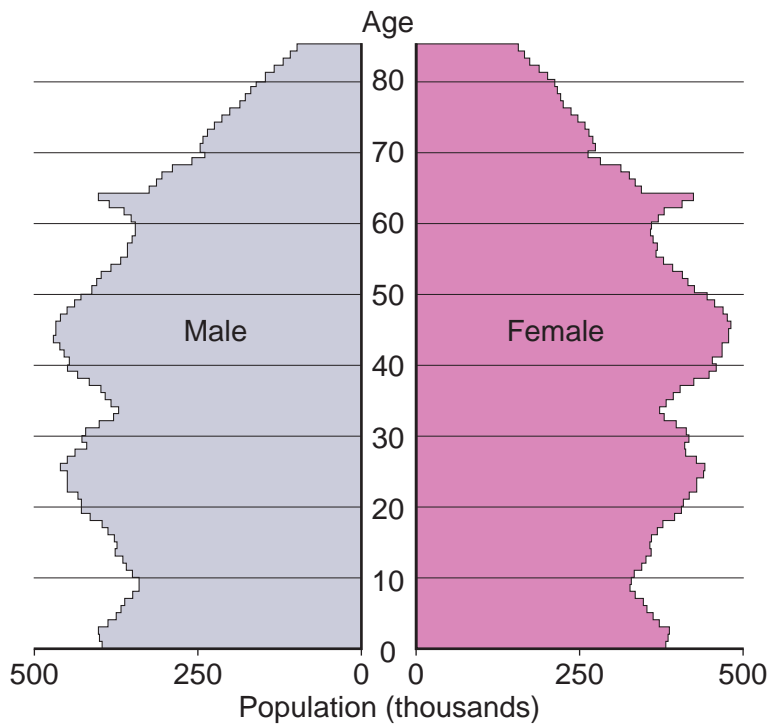
Draw a sketch population pyramid to show the population structure of a country in stage 2 of the demographic transition model.



(3 marks)

5 (b) (ii) **Figure 7** shows a population pyramid for people aged up to 85 in England and Wales in 2010.

Figure 7



6 Food Supply Issues

6 (a) **Figure 8** shows percentage change in food production per capita, between 1960–1981 and 1960–2001.

Figure 8

Area	1960–1981 (% change)	1960–2001 (% change)
Africa	-6	-10
Asia	14	73
South America	15	44
World	12	26

Summarise trends shown in **Figure 8**.

.....

.....

.....

.....

.....

.....

.....

.....

.....

(4 marks)

Extra space

.....

.....

.....



6 (b) Figure 9 shows the top five global food retailers in 2009.

Figure 9

Company	Location of Head Office	Sales (\$ million)
Wal-Mart	USA	405 000
Carrefour	France	115 240
Tesco	UK	86 012
Schwarz Group	Germany	80 600
Metro	Germany	78 460

6 (b) (i) Outline characteristics of the top five food retailers shown in Figure 9.

.....

.....

.....

.....

.....

.....

(3 marks)

6 (b) (ii) Suggest issues regarding the supply of food that may result from these characteristics.

.....

.....

.....

.....

.....

.....

(3 marks)

Question 6 continues on the next page

Turn over ►



7 Energy Issues

7 (a) Figure 11 shows the primary energy mix of Brazil, China and France.

Figure 11

Energy consumption by type (%)			
Energy Source	Brazil	China	France
Coal	5	68	5
Natural gas	7	3	16
Oil	49	21	35
Nuclear	1	1	38
HEP	36	6	5
Other renewables	2	1	1

7 (a) (i) Summarise contrasts in the primary energy mix shown in **Figure 11**.

.....

.....

.....

.....

.....

.....

.....

.....

.....

.....

(4 marks)

Extra space

.....

.....

.....

Question 7 continues on the next page

Turn over ▶



7 (a) (ii) For either Brazil or China or France, outline **one or more** issues likely to result from the energy mix.

Country selected

.....

.....

.....

.....

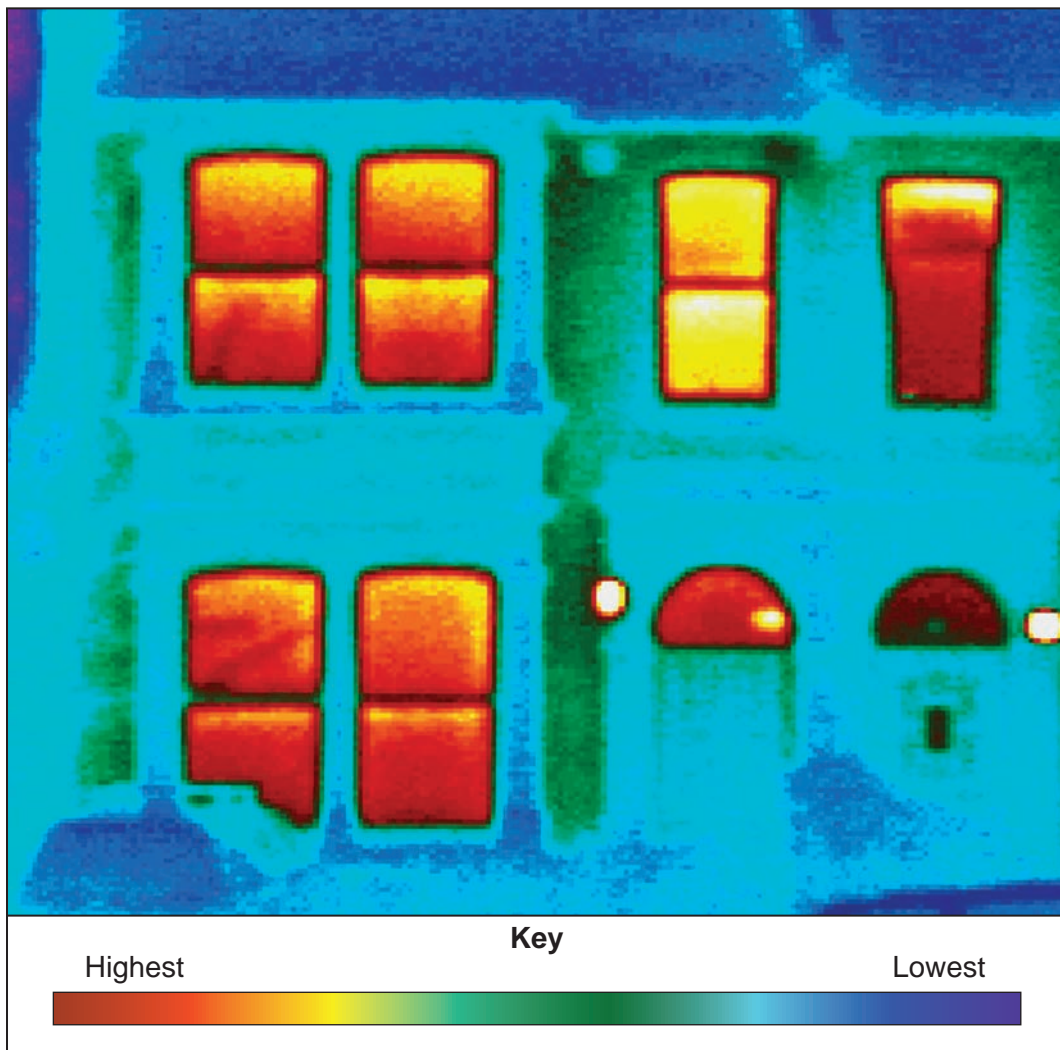
.....

.....

(3 marks)

7 (b) Figure 12 shows heat loss from the front of terraced housing.

Figure 12



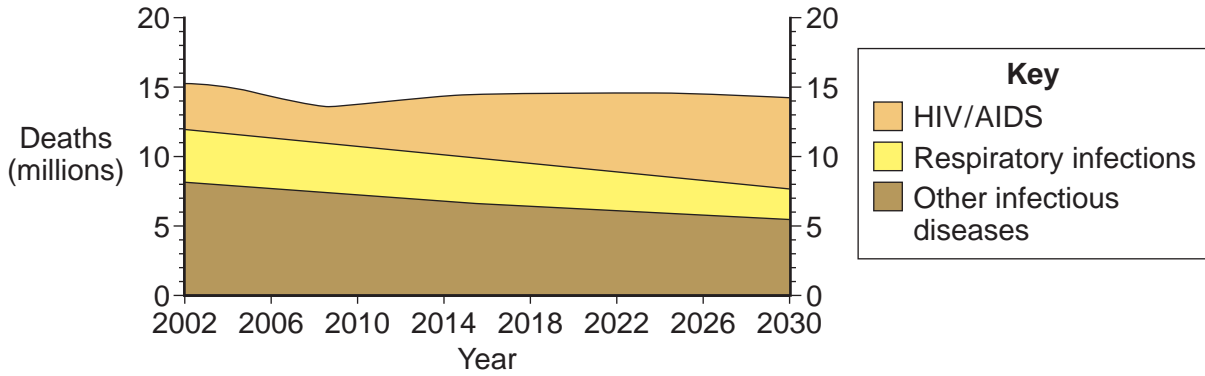
Dr Arthur Tucker/ Science Photo Library



8 Health Issues

8 (a) **Figure 13** shows projected world mortality from infectious diseases between 2002 and 2030.

Figure 13



8 (a) (i) Summarise the trends shown in **Figure 13**.

.....

.....

.....

.....

.....

.....

.....

.....

.....

.....

.....

(4 marks)

Extra space

.....

.....

.....

.....



8 (a) (ii) Suggest reasons for the trends shown in **Figure 13**.

.....

.....

.....

.....

.....

.....

(3 marks)

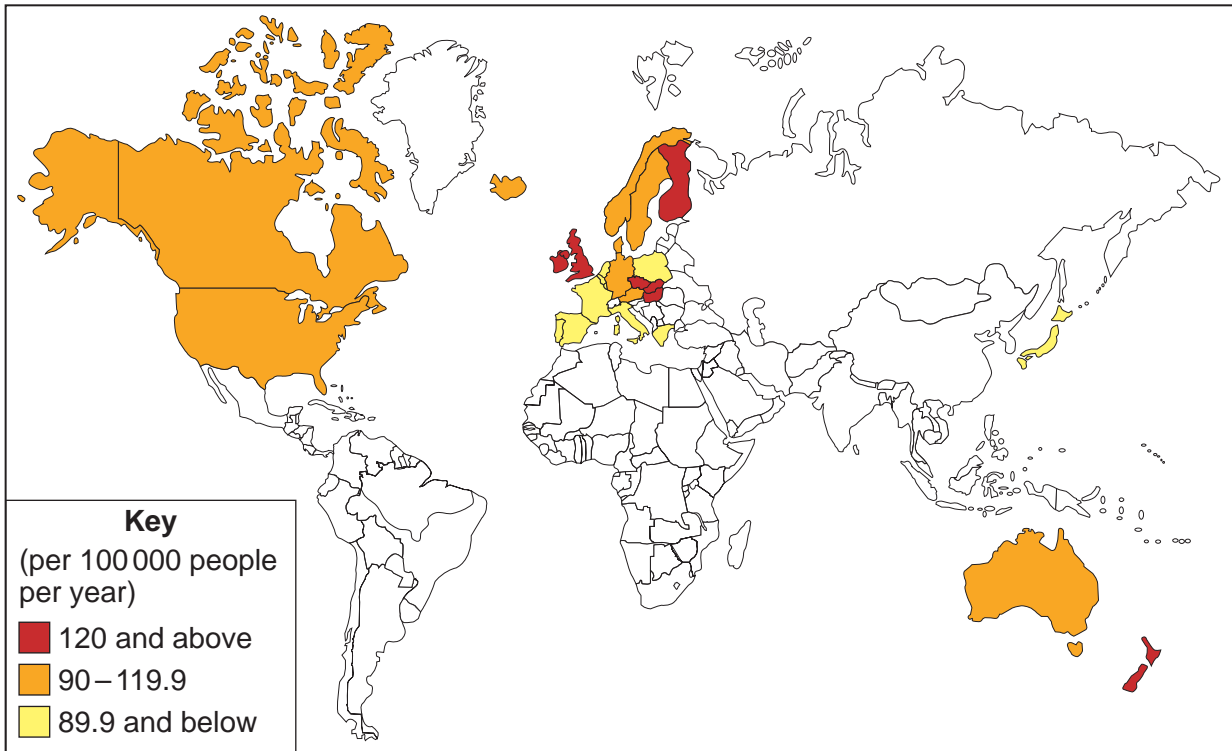
Question 8 continues on the next page

Turn over ►



8 (b) Figure 14 shows deaths from coronary heart disease for the top 26 countries worldwide in 2005.

Figure 14



8 (b) (i) Describe the pattern shown in Figure 14.

.....

.....

.....

.....

.....

.....

(3 marks)



8 (b) (ii) Comment on the impact of **one** non-communicable disease (eg coronary heart disease, cancer) on economic development.

.....

.....

.....

.....

.....

.....

.....

.....

.....

.....

.....

.....

.....

.....

.....

.....

.....

.....

.....

.....

.....

.....

(5 marks)

Extra space

.....

.....

.....

.....

.....

Question 8 continues on the next page

Turn over ►



There are no questions printed on this page

**DO NOT WRITE ON THIS PAGE
ANSWER IN THE SPACES PROVIDED**

ACKNOWLEDGEMENT OF COPYRIGHT-HOLDERS AND PUBLISHERS

Permission to reproduce all copyright material has been applied for. In some cases, efforts to contact copyright-holders have been unsuccessful and AQA will be happy to rectify any omissions of acknowledgements in future papers if notified.

- Figure 1: Adapted with permission of Nelson Thornes Ltd from Geography: An Integrated Approach (4th edition) by David Waugh, 978-1-4085-0407-9, first published in 2009.
- Figure 2: © The Times 11/2010
- Figure 3: Photo taken by John Smith
- Figure 4: British Geological Survey © NERC. All rights reserved. IPR/144-01CT
- Figure 5: Photo taken by Lucy Cole
- Figure 6: www.prb.org
- Figure 7: Contains public sector information licensed under the Open Government Licence v1.0.
- Figure 8: Food and Agriculture Organization of the United Nations, Changes in per capita food production since 1960.
- Figure 9: Adapted with the permission of Nelson Thornes Ltd from 'The Geopolitics of Food' by Simon Nash, Geofile online, Series 29, Unit 628, first published in September 2010.
- Figure 10: © Tesco Stores Limited
- Figure 11: Adapted with the permission of Nelson Thornes Ltd from 'The Energy Mixes of China, Brazil and France' by Barbara Melbourne, Geofile online, series 28, Unit 599, first published in September 2009.
- Figure 12: Dr Arthur Tucker / Science Photo Library
- Figure 13: By kind permission of Cross Academe Limited
- Figure 14: http://www.nationmaster.com/red/graph/hea_he_a_dis_dea-health-heart-disease-deaths

Copyright © 2013 AQA and its licensors. All rights reserved.

